



YUANTAI CRANE

GLOBAL CRANES AND LOGISTICS
HANDLING EXPERTS



Henan Yuantai Crane Machinery
Import&Export Co., Ltd.



YUANTAI CRANE

+86-15038346929

ytcranes

sales012@cranesdq.com

www.bettercrane.com

Room2005, Building3A, Shenglong Plaza,
South Dongfeng Road and Shangding Road,
Zhengzhou City, China



DONGQI GROUP

SINO-FOREIGN JOINT VENTURE
EUROPEAN TECHNOLOGY



Dongqi Group is a Sino-foreign joint venture. The Group consists of subsidiaries: Henan Dongqi Machinery Co., Ltd manufacturing), Henan Yuantai Crane Machinery Import&Export Co., Ltd (Foreign Trade).

Henan Yuantai Crane Machinery Import&Export Co., Ltd consists of sales, e-commerce, service department, engage the Group's foreign trade. There are more than 300 employees in our company, 200 salesmen and 50 persons in the service department. Our customers distribute throughout the southeast Asia, Russia, east europe, the Middle east, Africa and other areas, the products are welcomed by all customers.

The company mainly manufactures such products: various European-style Bridge, gantry cranes, European-style electric block, etc. Some key core components are original Britain SZW product. The structures are manufactured by strictly following European-style technology standards, so that the overall performance reaches advanced world level. The products are widely applicable to multiple fields such as steel, electric power, petrochemical industry, machine building, war industry, warehouse logistics and papermaking. We will offer you the best designs and provide high-standard tailor-made European-style cranes with highly-efficient technology and economic index.



SERIES PRODUCTS

European Standard Crane

Double girder overhead crane
Single girder overhead crane
Electric hoist

Double Girder Overhead Crane

LH type double girder electric hoist crane
QB type explosion-proof overhead crane
QC type electromagnetic overhead crane
QD type overhead crane with hook
QDY type ladle overhead crane
QE type double trolley overhead crane
QY type insulation overhead crane
QZ type grab bucket overhead crane

Multi-function crane

Single Girder Overhead Crane

LB type explosion-proof overhead crane
LD type single girder electric hoist crane
LDP type low headroom single girder overhead crane
LX type single girder suspension crane

Gantry Crane

Single Girder Gantry Crane
Double Girder Gantry Crane
BMH Semi-Gantry Crane

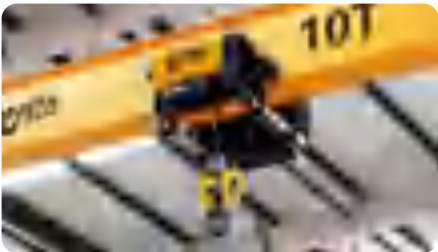
Jib Crane

BZ type pillar jib crane
BX type wall mounted jib crane
BB type wall-travelling jib crane

Electric Hoist

CD type single speed wire rope electric hoist
MD type double speed wire rope electric hoist
BCD type explosion-proof electric hoist
YH type metallurgical electric hoist
Electric chain hoist
Manual chain hoist
Mini electric hoist

Electric Winch



European
Standard

Double Girder Overhead Crane



QDX type overhead crane

Double Girder Overhead Crane

European Standard Double Girder Overhead Crane have features of design concepts, small dimension, light dead weight, Compared with traditional cranes, the limiting distance is minimum from hook to wall, and headroom is the lowest, which makes cranes work more close to the front, and lifting height more higher that increases effective working space of workplace.

New workshops can be designed more smaller and have more functions because the dead weight is light, and the wheel pressure is small. Smaller size workplace means saving a huge amount of money from initial construction investment, long-term heating, air conditioning and other maintenance free.

Design standard: FEM, DIN
Lifting capacity: 1.6t-100t
Span: ≥6m
Working class: A5, A6
Ambient temperature: -20-40°C
Advantage: The best design with best configuration, such as: Schneider, ABM, SEW, French Steel Rope and so on. It is very popular with competitive offering.



European
Standard

Double Girder Overhead Crane



Double Girder Overhead Crane Parameter (16tons)

Span	S(m)	10.5	13.5	16.5	19.5	22.5	25.5	28.5	31.5
Working duty		A5							
Lifting height	m	6、9、12							
Lifting speed	m/min	0.66/4							
Trolley speed	m/min	2.0~20 3.0~30							
Crane speed	m/min	3.0~30 4.0~40							
Total weight	kg	8506	10500	12754	14827	17235	20579	23554	27371
Max Wheel Load	KN	112	120	127	133.4	140.2	74.6	78.5	83.4
Track		P38							
RMain dimension	mm	10.5	13.5	16.5	19.5	22.5	25.5	28.5	31.5
Rail top to main top	H	1416	1516	1618	1518	1568	1568	1568	1618
Rail top to girder bottom	H1	82.5	82.5	82.5	183	235	384	434	534
Rail top to hook centre	H2	224	324	426	326	376	376	376	426
Hook left limitation	C1	1250							
Hook right limitation	C2	1250							
Trolley gauge	L	1800	1800	1800	1800	1800	2200	2200	2200
Wheel base	W	3850	3850	3950	4000	4000	4458	4598	4598
Crane width	B	4584	4584	4684	4734	4734	5132	5272	5272
Track center to end beam	A	140	140	140	140	140	188	188	188

Single Girder Overhead Crane



Single Girder Overhead Crane

European style single girder overhead cranes have the design concepts of small dimension, light dead weight and so on. Compared with traditional crane, European style single girder overhead crane has the minimum limiting distance from hook to wall, lower headroom and higher lifting height.

With these features, the European style single girder overhead crane could provide the workplace with more effective working space. As a result of it, the workplace could be designed smaller than before but with more functions. In addition, the wheel pressure is also decrease because the dead weight than before. A huge amount of money could be saved from the initial construction investment, long term heating fee, air conditioning and other maintenance fee. From the above, European style single girder overhead crane is a advisable choice for the client.

Design standard: FEM, DIN
Lifting capacity: 1t-20t
Span: ≥6m
Working class: A5,A6
Ambient temperature: -20-40°C
Advantage: The best design with best configuration, such as: Schneider, ABM, SEW, French Steel Rope and so on. It is very popular with competitive offering.



Single Girder Overhead Crane



Single Girder Overhead Crane (10tons)

Span	S(m)	7.5	10.5	13.5	16.5	19.5	22.5	25.5
Working duty		A5						
Lifting height	m	6、 9、 12						
Lifting speed	m/min	0.8/5						
Trolley weight	kg	640						
Total weight	kg	2696	3200	4091	5307	6466	7694	9309
Max Wheel Load	KN	51.85	54.44	57.7	60.83	64	67.26	71.36
Track		P30						
Main dimension	mm	7.5	10.5	13.5	16.5	19.5	22.5	25.5
Rail top to main top	H	908	908	1008	1208	1308	1358	1482
Rail top to hook centre	h	465	465	465	365	365	365	345
Hook left limitation	C1	675	675	675	675	675	675	695
ook right limitation	C2	1020						
Track center to end beam lateral	A	100						
Wheel base	W	2000	2000	2000	2500	3000	3000	3500
Crane width	B	2674	2674	2674	3174	3674	3674	4174



European Standard Electric Hoist

European wire rope electric hoist offer outstanding quality and efficiency. Absolutely reliability is one of the most important features. We introduced latest technology like infinitely variable speed control, braking energy feedback system, safety monitor into control system. All those innovations benefit our customers for greater reliability and efficiency and make our wire rope hoist very competitive in the market.

Machinery design is based on FEM calculations for standard lifting gear allowing safe and reliable lifting of loads from 3.2 to 80 tons. Machinery has smooth and silent operation that extends the lifetime of the hoist.

Design standard: FEM, DIN
Lifting capacity: 3.2~100t
Lifting height: 6~50m
Working class: M5, M6
Ambient temperature: -20~40°C
Application: It can be mounted on single beam, bridge, gantry and jib cranes, widely used in factories, mines, harbours, warehouses, cargo storage areas and shops.



European Standard Electric Hoist (10tons)

Working duty	M6			
Lifting height	m	6	9	12
Lifting speed	m/min	0.66/4		
Pulley ratio		4/1		
Traveling speed	m/min	2~20		
Max Wheel Load	KN	34.7	34.8	34.9
Total weight	kg	650	690	730
Main dimension	mm	6	9	12
width of main beam	b	300~450		
Lifting side width	K1	560	560	560
Operation side width	K2	550	550	550
Hoist length	l	1140	1320	1500
Hook superior limit	h	700	700	700



LH type overhead crane

Double Girder Overhead Crane

Overhead crane is a kind of lifting equipment which is used in workshop, warehouse and yard to lift the materials. The end beam of bridge crane run along the laid on both sides of the elevated rail, the crane can make full use of the space below the bridge to lift materials, and it doesn't have obstacles from the ground equipment. So it is one of the most widely used, the largest number of hoisting machinery.

We can supply double girder overhead crane with lifting capacity: 5~500t, span:7.5~31.5m, lifting height: 3~50m, work class: A5,A6, speed: single / double speed. We also design and manufacture the nonstandard crane according users' demanding.

Lifting capacity: 5-500 t

Span: 7.5-31.5m

Working class: A5-A6

Ambient temperature: -20~+40°C

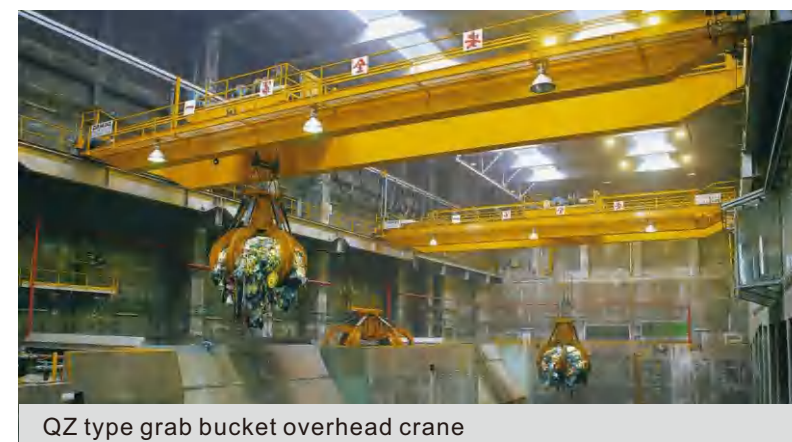
Application: The product is applicable to the transfer, assembly, check and repair as well as load and unload at mechanic processing workshop, subsidiary workshop of metallurgical mills, warehouse, goods yard and power station.



QB type explosion-proof overhead crane



QD type overhead crane with hook



QZ type grab bucket overhead crane



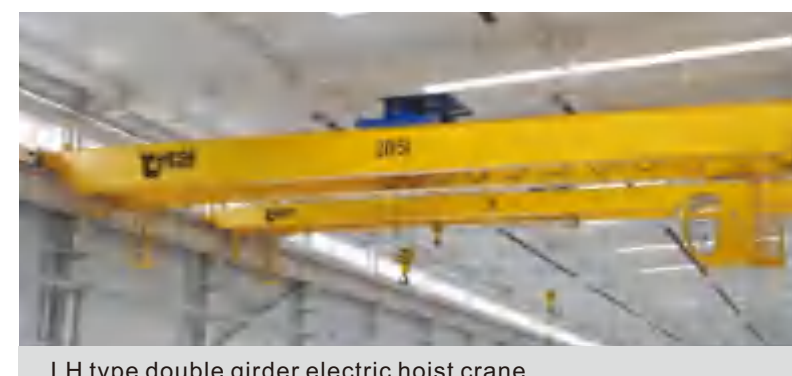
QY type insulation overhead crane



QC type electromagnetic overhead crane



QDY type ladle overhead crane



LH type double girder electric hoist crane



QE type double trolley overhead crane



LD type single girder electric hoist crane

Single Girder Overhead Crane

Overhead crane is a kind of lifting equipment which is used in workshop, warehouse and yard to lift the materials. The end beam of bridge crane run along the laid on both sides of the elevated rail, the crane can make full use of the space below the bridge to lift materials, and it doesn't have obstacles from the ground equipment. So it is one of the most widely used, the largest number of hoisting machinery.

We can supply single girder overhead crane with lifting capacity: 0.5~20t, span:7.5~28.5m, lifting height: 3~30m, work class: A3,A4, speed: single / double speed. We also design and manufacture the nonstandard crane according users' demanding.

Lifting capacity: 0.5-20 t

Span: 7.5-28.5m

Working class: A3-A4

Ambient temperature: -20~+40°C

Application: This product is widely used in plants, warehouses, material stocks to lift goods. It is prohibited to use the equipment in the combustible, explosive or corrosive environment.



LD type single girder electric hoist crane



LX type single girder suspension crane



LB type explosion-proof overhead crane



LDP type low headroom single girder overhead crane



European standard HD type single girder electric hoist crane



Double Girder Gantry Crane

Heavy Duty Gantry Crane

- Design and manufacture according to GB/T 14406 "General gantry crane".
- Mainly made up of bridge, trolley, crane traveling mechanism and electric system.
- All the procedure is finished in the operating room.
- Applies to the open warehouse or rail along for general handling and lifting work.
- Also can be equipped with other lifting devices like grab or container spreader or etc. for special work.
- Prohibited for high temperature, flammable, explosive, corrosion, overloading, dust or other dangerous operations.

Type: MG

Lifting capacity: 5t~500 t

Span: 18-35m

Working class: A5, A6

Ambient temperature: -20~+40°C

Application: This product is a regular crane widely used at open ground and warehouses to load, unload and grab materials. It has 2 controlling methods, namely ground controlling and room controlling.



Single Girder Gantry Crane

- It is consisted with gantry frame (main girder, legs, bottom end beams), lifting mechanism, travelling mechanism, and electrical control.
- It is used with matching CD1 or MD1 electric hoist, and is a light small crane with rail travelling.
- Widely used in workshop, storage, port and hydroelectric power station and some other outdoor places, where it has a low frequency or few lifting times.
- It is forbidden to be used with melt metal, inflammable, or explosive objects.
- It can be designed with one hanging arm or no-hanging arm according to client's demand.

Type: MH

Lifting capacity: 3~32t

Span: 12~35m

Working class: A3,A4,A5

Ambient temperature: -20~40°C

Application: This product is a regular crane widely used at open ground and warehouses to load, unload and grab materials. It has 2 controlling methods, namely ground controlling and room controlling.



Single Girder Gantry Crane

BZ type Pillar Jib Crane

- BZ-type pillar crane is a kind of small and medium-sized lifting equipment with the recent development. It has unique structure, and it is safe and reliable with the advantage of high efficiency and energy saving, timesaving, flexible and so on. And it can be operated freely in 3D space. And it can show its superiority when it is working in the short-range or intensive lifting occasions.
- Widely used in workshop, warehouse, dock and other fixed places.

Type: BZ

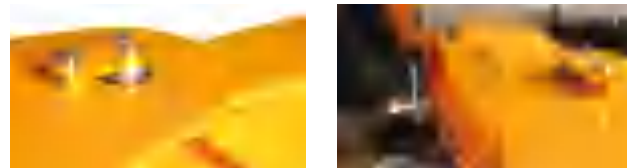
Lifting capacity: 0.5~10 t

Lifting height: 3~12m

Working class: A3

Ambient temperature: -25~+40°C

Application: It is widely used in manufacture of machine, car, ship building, the production line of industry modernization, assembly line and warehouse, wharf, laboratory.



BZ type Gantry Crane



BX type wall mounted Jib Crane

BX type wall mounted Jib Crane

- It is made of support column, jib device and electric hoist
- The cantilever is fixed on the wall or concrete post, and the rotation is according to your demand.
- The rotation method includes manual and electric.
- Widely used in permanent place such as workshop, storage and ports, etc.

Type: BX

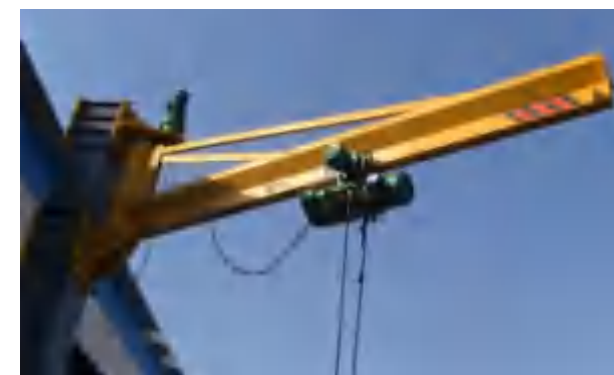
Lifting capacity: 0.25~1 t

Lifting height: 3~6m

Working class: A3

Ambient temperature: -25~+40°C

Application: It is widely used in manufacture of machine, car, ship building, the production line of industry modernization, assembly line and warehouse, wharf, laboratory.





FEM standard Electric Hoist

Electric Hoist

Electric hoist is a kind of special lifting equipment, installed on the crane and gantry crane. It has features of small volume, light weight, simple operation and convenient use, etc, which is used for industrial and mining enterprises, storage terminals and other places.

We can supply hoist with lifting capacity: 0.25~80t, lifting height: 3~50m, work class: A3,A4,A5, speed: single / double speed. We also design and manufacture the nonstandard crane according users' demanding.

Lifting capacity: 0.25~80t

Lifting height: 3~50m

Working class: A3, A4, A5

Ambient temperature: -20~40°C

Application: It can be mounted on single beam, bridge, gantry and jib cranes, widely used in factories, mines, harbours, warehouses, cargo storage areas and shops.



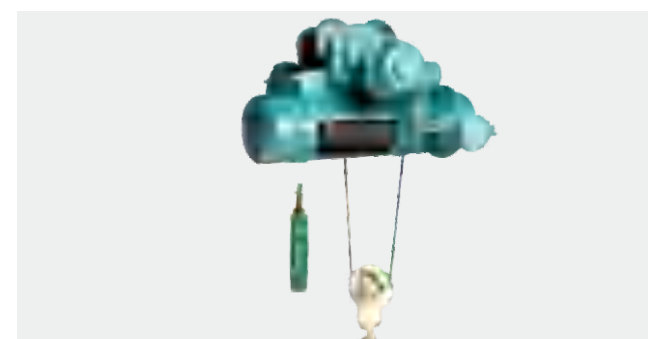
ND type european standard electric hoist



CD type single speed wire rope electric hoist



MD type double speed wire rope electric hoist



BCD type explosion-proof electric hoist



Electric chain hoist



YH type metallurgical electric hoist



Manual chain hoist



Mini electric hoist



Electric Winch



Electric Winch

Electric Winch

Winch is divided into manual winch and electric winch. Mainly used in construction, water, forestry, mining, port, etc material lift or drag.

This series mining winch is mainly used for all kinds of large and super large concrete, steel structure and mechanical equipment installation and removal. Its structure is characterized by order, safe and reliable .

Lifting capacity: 2~200t

Lifting height: 50~1000m

Working class: M3, M4, M5

Ambient temperature: -25~40

Application: Mainly used for hoisting pull and unloading tow the weight droop, for example, steel, installation and disassembly of mechanical equipment.



STRATEGIC PARTNERS



What we think is for customer needs.

Yuantai crane with their own advantages, strategic cooperation with international brand-name companies, which fully guarantee the quality and performance of the crane.



SEW
EURODRIVE



BMM
法 钢



SZAW



Perfect quality assurance system, strict quality control and comprehensive quality management make perfection possible for every section and every product. Mean while advanced inspection instruments in the world national authoritative inspection centers and steady quality inspection level give us confidence in fierce competition in the world.

ISO Certificates



European Union CE Certificates



Manufacture License of Special Equipment



Our products have been exported to the United States, Britain, Russia, Panama, Brazil, Australia India and etc **more than 120 countries and regions**. Yuantai remain a stable growth on global sales for many years, and keep increasing the share of the market year by year. Stable operation, qualities first, focus on customer's idea, these help to provide long-term security and reliable products, let the customer's material handling easier, and create more and more value for customers.



Pakistan Customer



Bosnia and Herzegovina Customer



Jordan Customer



Australia Customer



Russia Customer



Serbia Customer